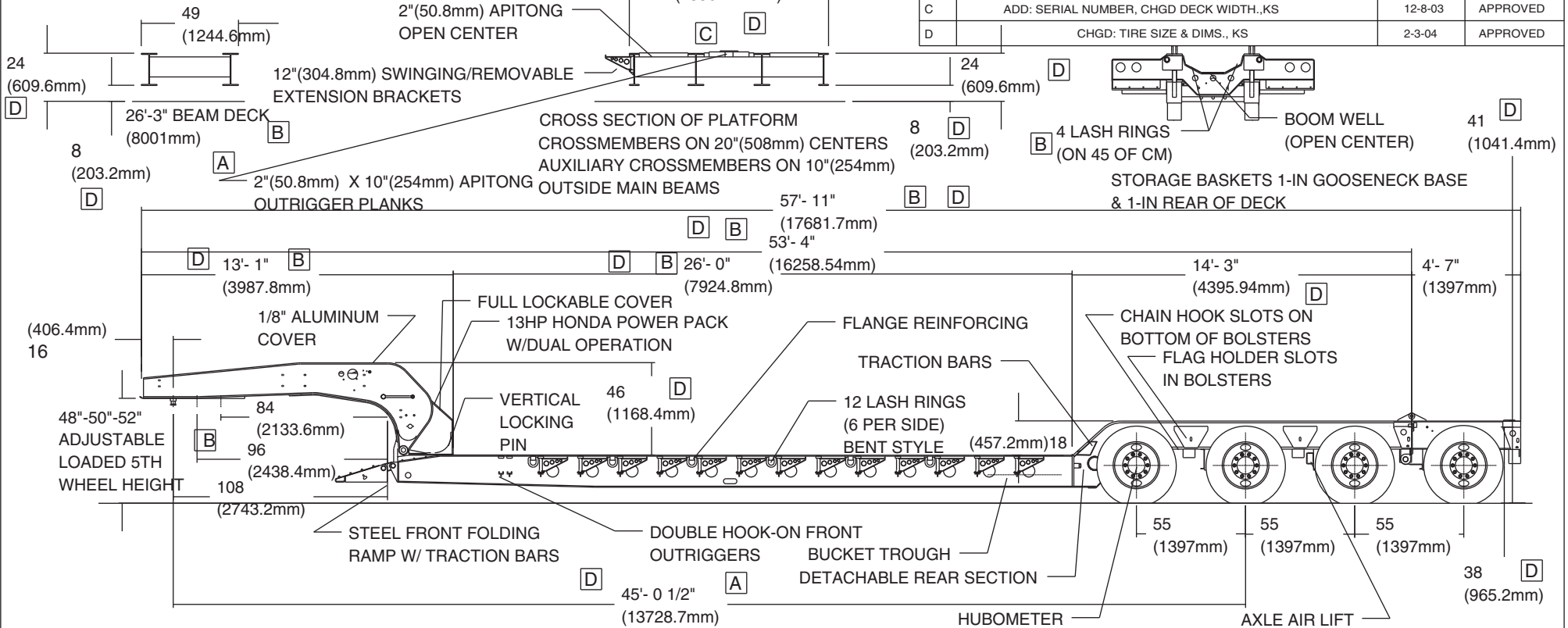


DEALER/CUSTOMER APPROVAL \_\_\_\_\_

DATE \_\_\_\_\_

WET LINE OPERATION

W.P.G. INTERNATIONAL



REVISIONS			
REV	DESCRIPTION	DATE	APPROVED
A	ADD: DETACHABLE REAR SECTION, BEAM DECK, KS	12-1-03	APPROVED
B	ADD: 4-LR IN BOOMWELL, CHG. SWING & DECK LGTH., KS	12-3-03	APPROVED
C	ADD: SERIAL NUMBER, CHGD DECK WIDTH., KS	12-8-03	APPROVED
D	CHGD: TIRE SIZE & DIMS., KS	2-3-04	APPROVED

66 TONS (60 metric tons) IN ANY 12'

FRAME REINFORCEMENT FOR 4TH AXLE & 3+1 (14'-1" (4292.6mm) SPREAD) TRACTION BARS ON FRONT SLOPE WET LINE OPERATION

11R/24.5(H) TIRES STEEL DISC WHEELS AIR RIDE SUSPENSION ETNYRE MANUAL (+3/-3) MANUAL EXHAUST VALVE 16 1/2" X 7" HEAVY DUTY AIR BRAKES (4) 25,000# 3/4" WALL AXLES SPRING BRAKES ON 2ND AXLE SPARE TIRE & WHEEL

PAINT: BLACK

AIR RAISE & LOWER VALVE

DRAWING IS FOR ILLUSTRATIVE PURPOSES ONLY. ALL WEIGHTS AND DIMENSIONS ARE APPROXIMATE. TRAILER IS SHOWN IN FULLY LOADED CONDITION. PLATFORM HEIGHTS WILL INCREASE IF LOADED LESS THAN FULL CAPACITY.

GENERAL NOTES: REMOVE ALL BURRS BREAK SHARP EDGES MINIMUM BEND RAD. UNLESS SPECIFIED BEND RELIEF SHOP OPTION	DFTR _____ KS
	SALES _____ KS/JK
	ENGR _____
	APPD _____
66 TONS (60 metric tons) IN ANY 12' & 14' SPREAD SER.NO: Q28480 & Q28481	TOLERANCE UNLESS SPECIFIED
	FRACTIONAL 1/32
	DECIMAL .01
	ANGLES 30°
FINISH CHART	

**E.D.ETNYRE&CO.**  
OREGON,IL. 61061

ALL DIMENSIONS IN INCHES DO NOT SCALE DWG

DRAWING TITLE  
**A RTN66TD3-R4A-RA**

DWG SIZE B	DRAWING NO. <b>RTN-3238</b>	REV D
SCALE NONE	DATE <b>11-4-03</b>	SHEET 1 OF 1